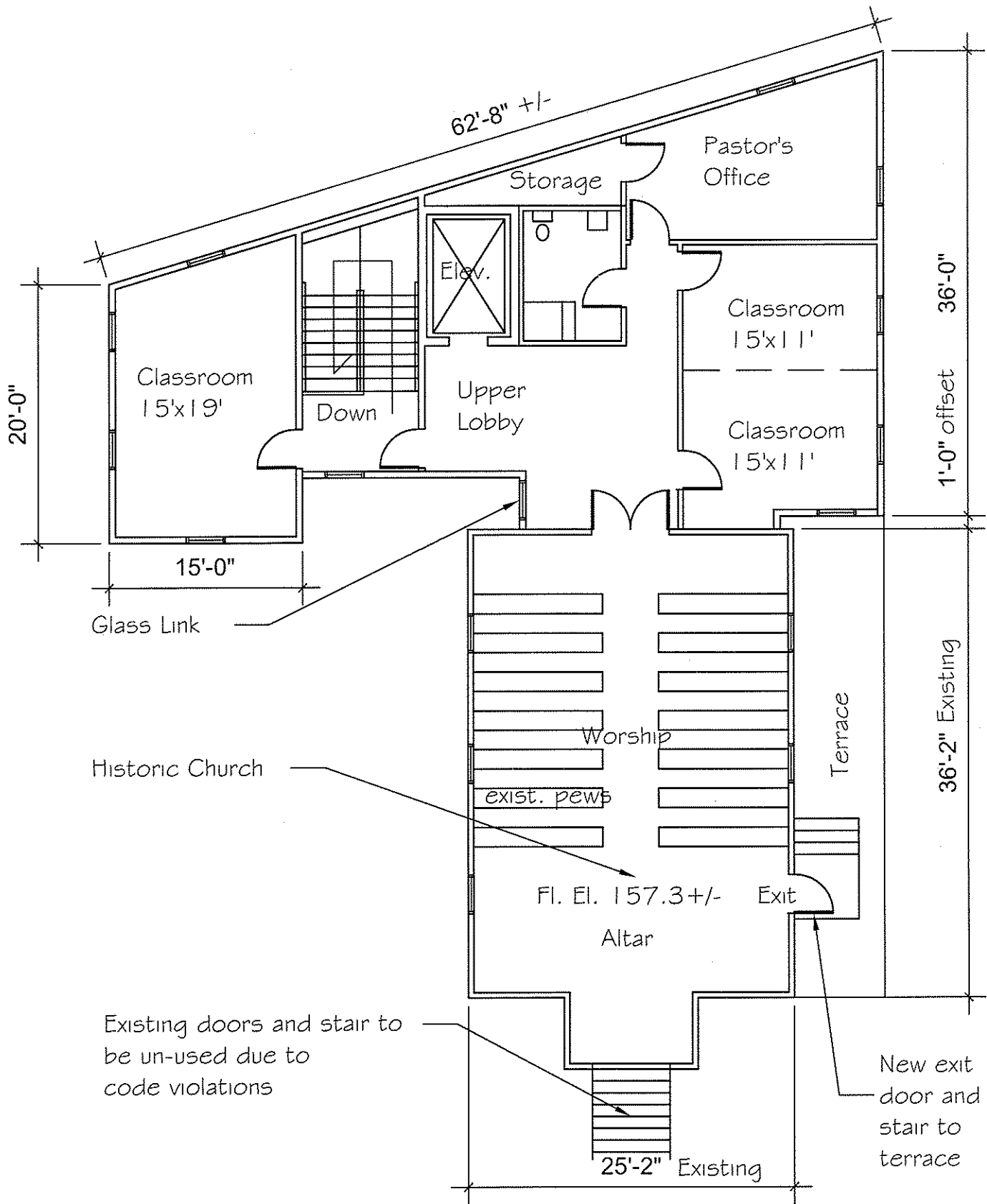


LOWER FLOOR PLAN Scale 3/32" = 1'-0"

FIRST AGAPE A.M.E. ZION CHURCH - GIBSON GROVE

May 30, 2012
 Total Construction Services, Inc. 410-461-7200
 Stan Ryder, Jr. Architect PA 410-848-5662



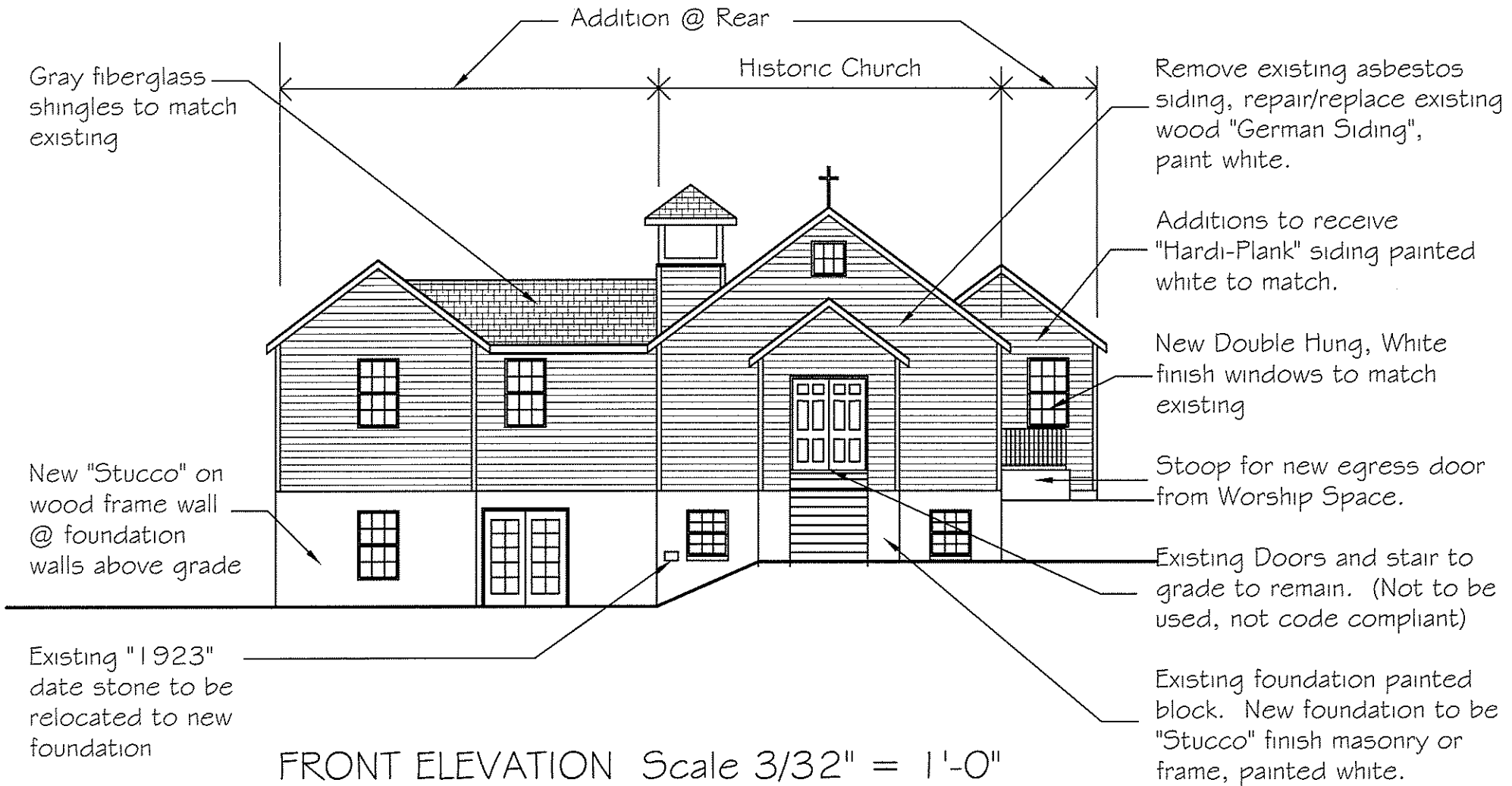
UPPER FLOOR PLAN Scale $3/32" = 1'-0"$

FIRST AGAPE A.M.E. ZION CHURCH - GIBSON GROVE

May 30, 2012

Total Construction Services, Inc. 410-461-7200

Stan Ryder, Jr. Architect PA 410-848-5662

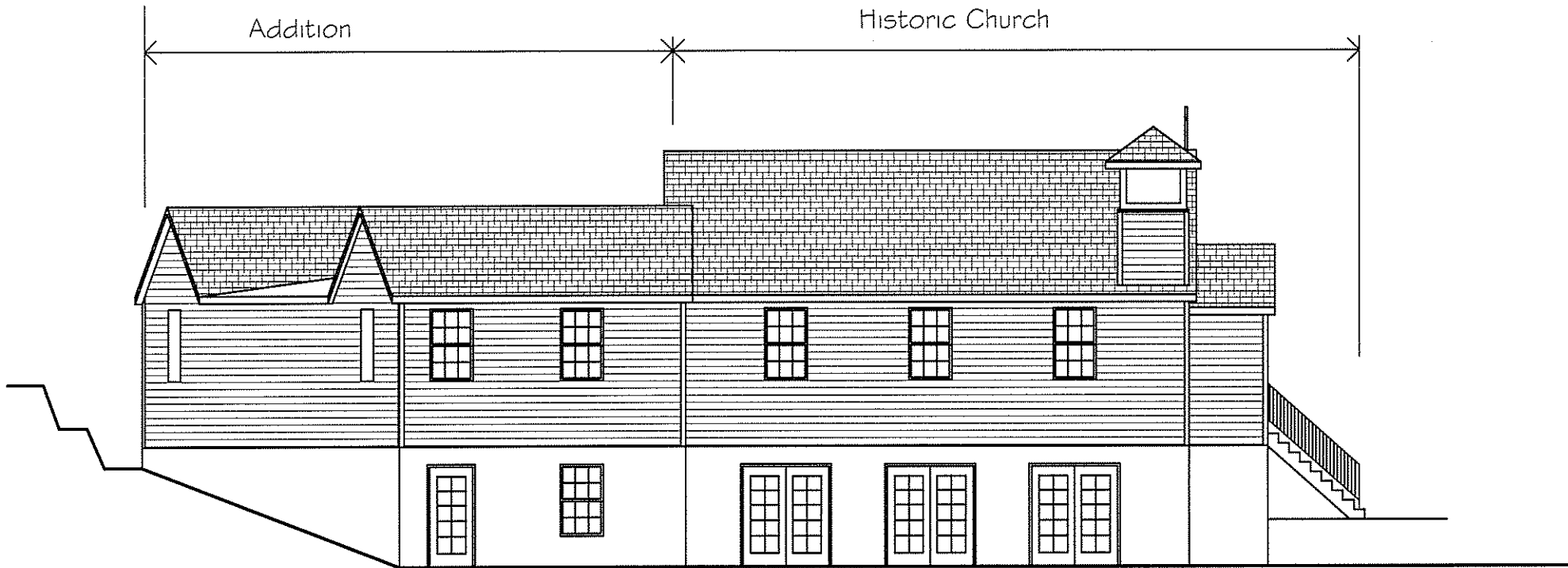


FIRST AGAPE A.M.E. ZION CHURCH - GIBSON GROVE

May 30, 2012

Total Construction Services, Inc. 410-461-7200

Stan Ryder, Jr. Architect PA 410-848-5662



REAR ELEVATION Scale $3/32" = 1'-0"$

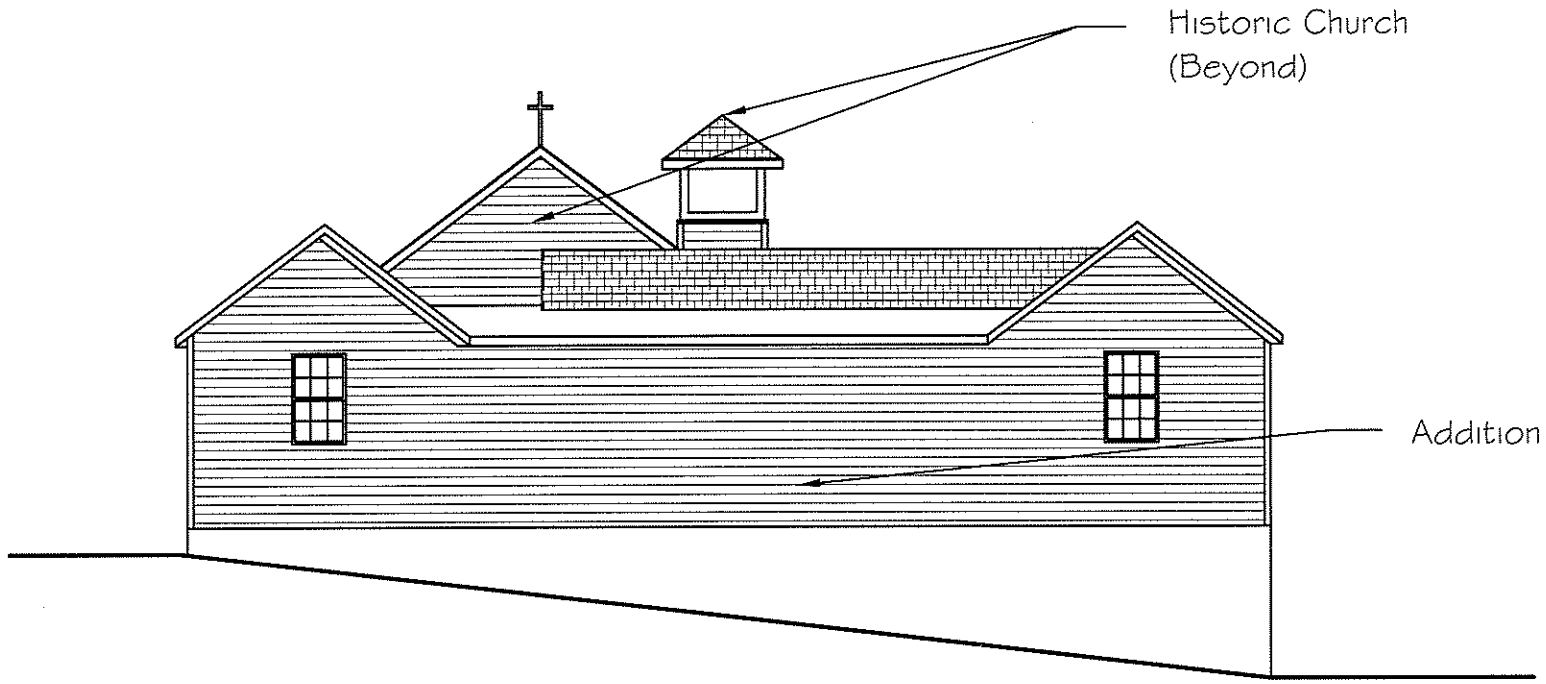
Repeat notes from
Front Elevation

FIRST AGAPE A.M.E. ZION CHURCH - GIBSON GROVE

May 30, 2012

Total Construction Services, Inc. 410-461-7200

Stan Ryder, Jr. Architect PA 410-848-5662



REAR ELEVATION Scale 3/32" = 1'-0"

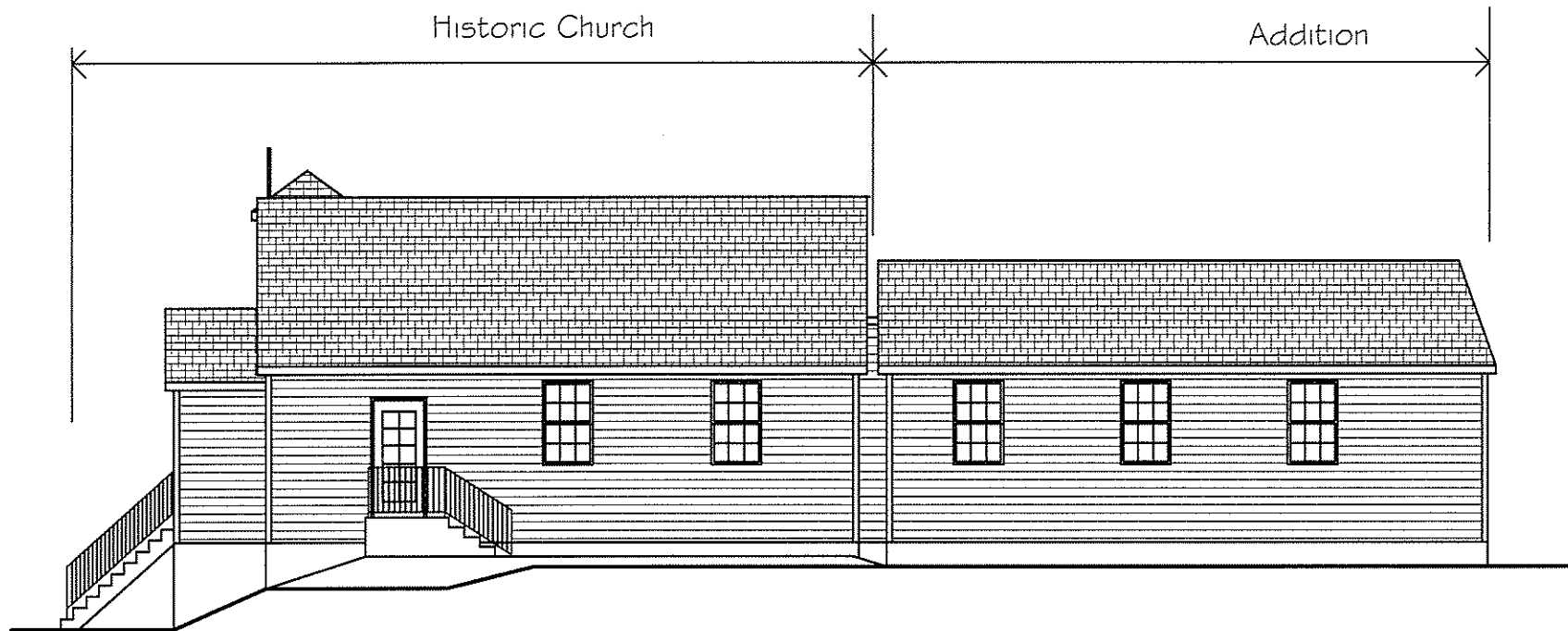
Repeat Notes from
Front Elevation

FIRST AGAPE A.M.E. ZION CHURCH - GIBSON GROVE

May 30, 2012

Total Construction Services, Inc. 410-461-7200

Stan Ryder, Jr. Architect PA 410-848-5662



LEFT SIDE ELEVATION Scale $3/32'' = 1'-0''$ Repeat Notes from
Front Elevation

FIRST AGAPE A.M.E. ZION CHURCH - GIBSON GROVE

May 30, 2012

Total Construction Services, Inc. 410-461-7200

Stan Ryder, Jr. Architect PA 410-848-5662